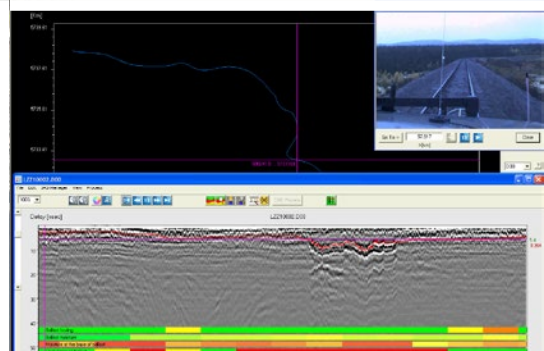
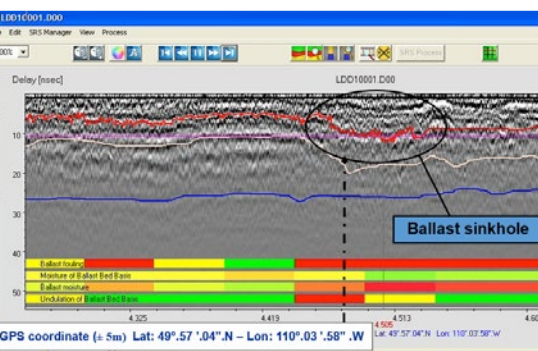


Ground Penetrating Radar (GPR)

Ballast Evaluation from the Industry's Experts on Track



A subsidiary of FTM International



North America's leader in Track and Transit & Systems construction and maintenance services

Ground Penetrating Radar (GPR)

Introducing a Fast, Definitive Solution to Evaluate Railway Ballast



RailWorks and FTM Expert System have joined together to provide a non-invasive way to inspect and evaluate the quality of railway ballast. Utilizing the integrated radar array SRS SafeRail system, RailWorks delivers a comprehensive inspection and diagnostic evaluation to improve track maintenance decisions.

- **Minimal survey time** – Hi-rail vehicles with the GPR-mounted solution can efficiently get on and off the track at crossings and evaluate ballast quality at maximum speeds allowable for each rail line.
- **Data on key ballast metrics** – Radar-based technology provides rapid and thorough evaluation of these fundamental ballast characteristics that impact performance and safety:
 - ◆ thickness
 - ◆ cleanliness
 - ◆ bearing capacity
 - ◆ moisture and drainage issues
- **Immediate, actionable results** – Automatic tools immediately interpret the data so you can quickly determine the appropriate action plan. GPS coordinates make it easy to pinpoint track locations and railroad assets.
- **Better network performance** – Results provide comprehensive information so you can take prompt action to improve the safety and reliability of the network.
- **Lower maintenance costs** – When used over time, the service will reduce costs associated with maintaining your track and provide a valuable analysis of the evolution of the ballast.

**Ground Penetrating Radar Services from RailWorks and FTM Expert System.
We're working together to make your track strong.**

Contact us for more information:

Sébastien Nadeau
FTM Expert System
418, Sherbrooke street East, Unit 200
Montreal, Quebec H2L 1J6
514.954.0070, ext. 527
snadeau@ftm-intl.com

R.T. Swindall
RailWorks Maintenance of Way, Inc.
904.296.5055
rtswindall@railworks.com



A subsidiary of **FTM International**



RailWorks Maintenance of Way
9250 Baymeadows Road, Suite 220
Jacksonville, FL 32256
904.619.0161
www.railworks.com